

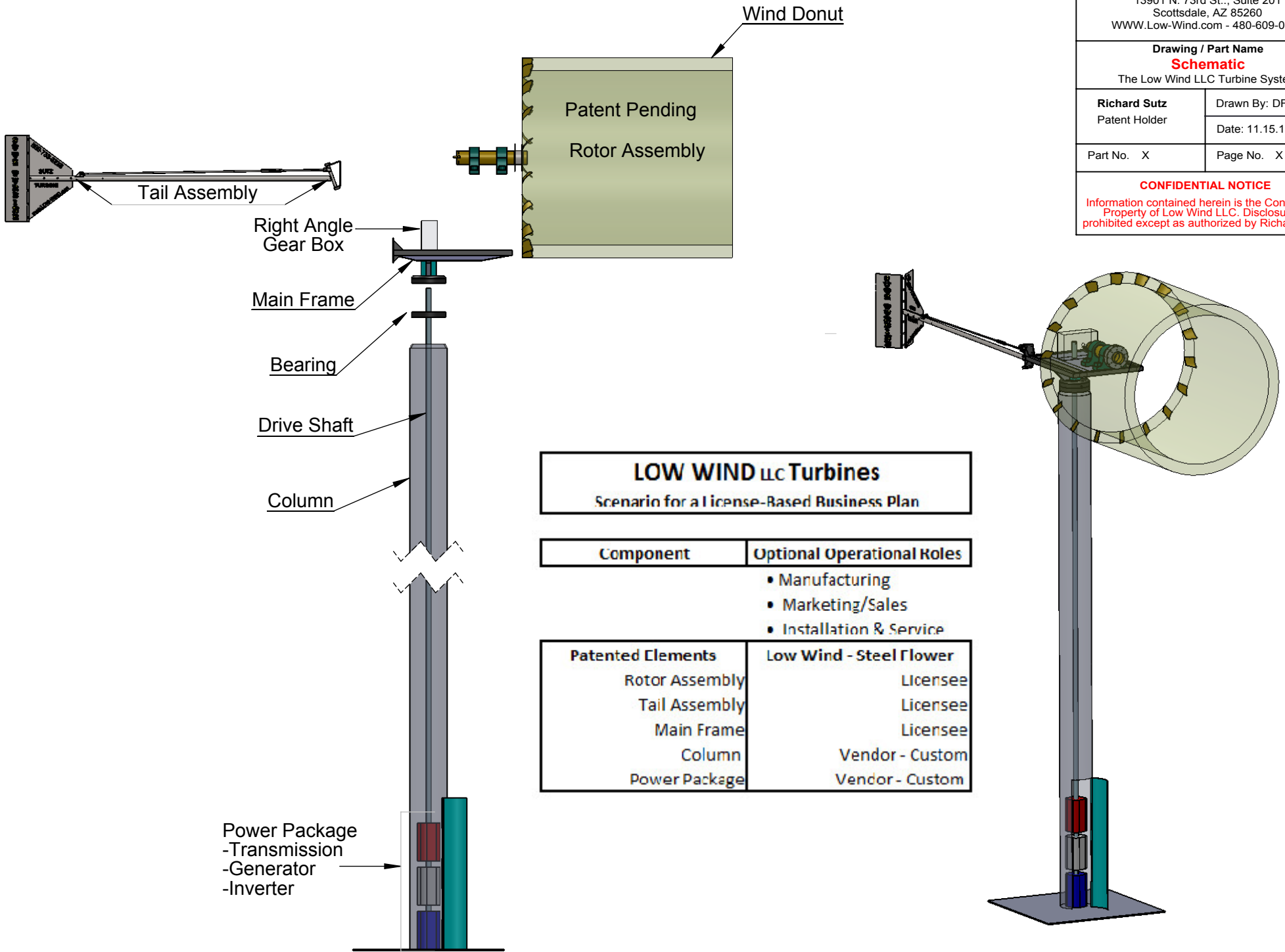
The Low Wind LLC Turbine System

LOW WIND LLC
Richard Sutz, CEO
 CEO@Low-Wind.com
 13901 N. 73rd St., Suite 201
 Scottsdale, AZ 85260
 WWW.Low-Wind.com - 480-609-0058

Drawing / Part Name
Schematic
 The Low Wind LLC Turbine System

Richard Sutz Patent Holder	Drawn By: DFM
	Date: 11.15.13
Part No. X	Page No. X

CONFIDENTIAL NOTICE
 Information contained herein is the Confidential Property of Low Wind LLC. Disclosure is prohibited except as authorized by Richard Sutz.



LOW WIND LLC Turbines

Scenario for a License-Based Business Plan

Component	Optional Operational Roles
	<ul style="list-style-type: none"> • Manufacturing • Marketing/Sales • Installation & Service
Patented Elements	Low Wind - Steel Flower
Rotor Assembly	Licensee
Tail Assembly	Licensee
Main Frame	Licensee
Column	Vendor - Custom
Power Package	Vendor - Custom

Power Package
 -Transmission
 -Generator
 -Inverter